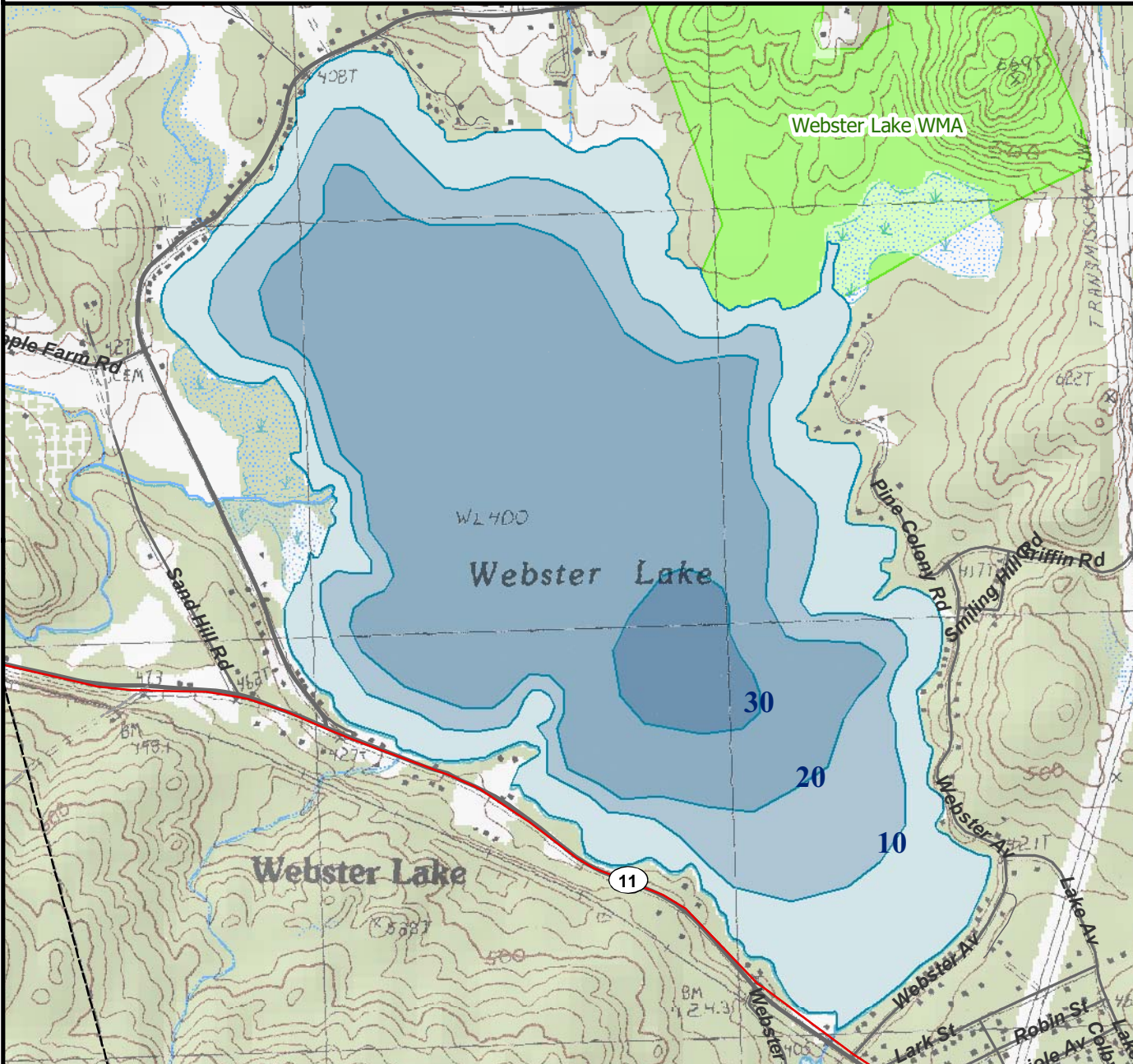


For regulation information, please refer to the NHFGD Freshwater Fishing Digest.

Contact: NHFGD Region 2 (Lakes Region), New Hampton
E-mail: reg2@nhfgd.org Phone: 603-744-5470

WEBSTER LAKE Franklin



FISHERY: Warmwater ACRES: 606
TROPHIC LEVEL: OLIGO
AVG DEPTH: 18 MAX DEPTH: 39
SPECIES: RT,BT,SMB,LMB,ECP,HP,WP

ADDITIONAL INFO:

ACCESS: Town ramp (residents), Rte 11 shorebank access Wildlife Mgt Area

Contact NH Dept of Safety, Marine Patrol Bureau for information regarding waterbody restrictions (603) 293-0091

● Water Access site (State, Federal, or Road-to-Public-Water)

~ Bathymetric contour

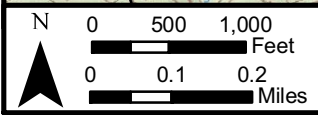
Bathymetry (depth in feet)

Lightest Blue	Less than 10	Dark Blue	30 to 40
Light Blue	10 to 20	Medium Blue	40 to 50
Medium Blue	20 to 30	Darkest Blue	Greater than 50

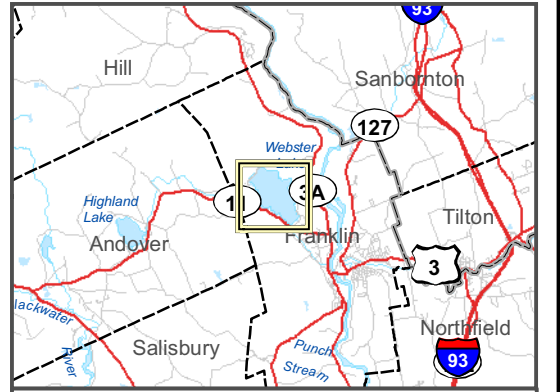
Bathymetry data provided by the NH Department of Environmental Services, Watershed Mgt Bureau

—	Town boundary	—	Cleared
—	Primary Route	—	Forest
—	Road or Street	—	Contour
—	Trail or other	—	Building
—	Stream or Shoreline	—	Source: USGS

Light Blue	Surface Water	Green	Conservation Land
Blue with dots	Wetland	Green with cross-hatch	Restricted Access Conservation



Most data presented on this map represent stock data sets obtained from NH GRANIT, Complex Systems Research Center, UNH. CSRC, NHOEP, NHFGD and the cooperating agencies make no claim as to the validity or reliability or to any implied uses of these data. NOT FOR NAVIGATION.



Directions: Route 11